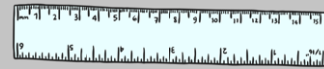
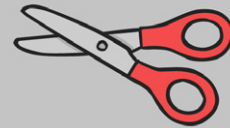
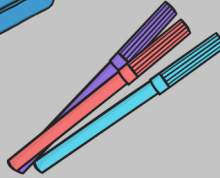
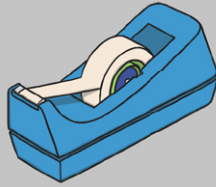


Rain Gauge

Supplies

- Plastic bottle
- Sticky tape
- Scissors
- Marker pen
- Tape measure / ruler



Method



1 Take a clear plastic bottle and carefully cut the top off.



2 Turn the top upside-down and put back inside the empty bottle, like you would a funnel.



3 Use strong sticky tape to stick the top to the main part of the bottle.



4 Use a ruler or a tape measure and marker pen to mark out the scale on the side of the bottle.

Now just leave the rain gauge outside in the open (away from buildings and trees) and wait for some rain!

To secure the bottle and ensure it stays upright outside you could either put pebbles in the bottom to weigh the bottle down or dig a hole to bury the bottle in, with just the top sticking out from the ground.

Thermometer

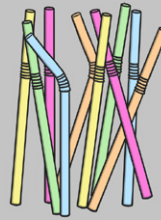
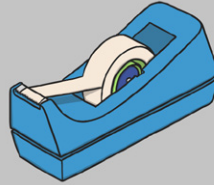
Method

- 1 Place a thermometer in a safe and secure place outside and use sticky tape to attach it.
- 2 Ensure you take temperature readings at the same time every day.

Weather Vane

Supplies

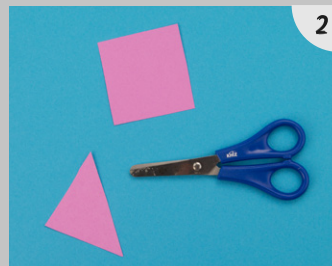
- Drinking straw
- Scissors
- Card
- Glue
- Plastic coffee cup with lid
- Pencil with rubber on the top
- Pin
- Sticky tape
- Compass
- Small pebbles



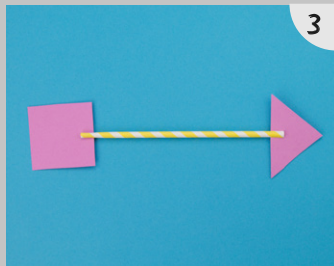
Method



1 Cut a slit in each end of a drinking straw (if your straw has a bendy part then cut this off).



2 Cut a square and a triangle out of the card. Make sure the triangle is smaller than the square.



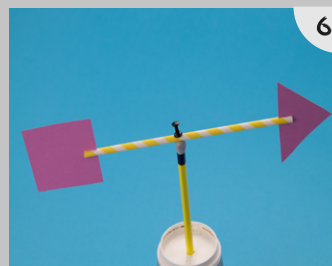
3 Stick the square and triangle into the slits in the straw to make your arrow.



4 Fill the plastic cup with heavy objects such as sand or small pebbles.



5 Tape the lid on, turn the plastic cup upside-down and stick the pencil through it into the sand or small pebbles.



6 Stick a pin into the middle of the straw and then into the rubber on top of the pencil.

Now just set the weather vane in a secure place and use a compass to mark on the directions.